



## SMYO SOCCER PROGRAM

The Southern Maryland Soccer Program offers recreational soccer for youth ages 4-17. Our organization participates in the Southern Maryland Youth Soccer League of Charles County along with five other organizations. We have the following coed age groups, except high school age soccer is not coed:

PeeWee Soccer	4 year olds
Under 7 (U7)	5 & 6 year olds
Under 9 (U9)	7 & 8 year olds
Under 12 (U12)	9, 10, & 11 year olds
Under 14 (U14)	12 & 13 year olds
Under 18 (U18)	14-17 year olds, boys and girls

### Registration Requirements

SMYO has two soccer seasons, spring and fall. The spring season begins mid-March through mid-June with online registration beginning in December. The final walk-in registrations are usually in February. The fall season begins in August and ends about October 31<sup>st</sup>. The registration usually runs June and July. The following documents must be provided or completed for each player:

- \* Birth Certificate – every new player must provide a copy, only once.
- \* Registration Form – either online or hard copy form at walk-in days.
- \* County Registration Form – all players except PeeWee.
- \* Code of Conduct – every parent must sign this form. (Parents with more than 1 child may sign only one form)

### Player Equipment & Uniforms

Players receive a jersey and black soccer socks and keep these at the end of the season. Parents must purchase black soccer shorts (shorts with no pockets), shin guards, and soccer cleats. We recommend purchasing extra soccer socks for practices. The players are required to wear the jersey, black shorts, black soccer socks, shin guards, and cleats to games. For practices, the players may wear any appropriate exercise clothing with shin guards and cleats. PeeWee players are permitted to wear tennis shoes for practices and games but cleats are recommended.

### **COACHES CANNOT ALLOW PLAYERS ON ANY SOCCER FIELD WITHOUT SHIN GUARDS.**

Soccer socks must cover the shin guards completely. Do not place a shin guard over the sock then pull the top down over the top. This is unacceptable because as the player runs, the shin guard will become exposed and becomes a safety concern.

We recommend every player bring their soccer ball to practices. Although coaches have an equipment bag full of soccer balls, having the extra balls during practices will help with the many drills.

### Coaches

All SMYO coaches are volunteers! Each coach selects the day and location of the practices that fits his/her schedule, typically 6-7pm or 7-8pm. All teams share a field for practices because of the few number of available soccer fields. We supply each coach with an equipment bag full of soccer balls, cones, practice vests/pennies, air pump & needles, 1<sup>st</sup> aid kit, coach's clipboard, stop watch, and lanyard with whistle. Coaches training is held the week before practices begin for each season.

## SOCCKER AGE GROUPS

Although we strive to keep the youngest players at SMYO facilities for both practices and games, circumstances may require that the teams participate in the County program. For example, if registration is low or field conditions are bad, the Commissioner(s) submit those teams to the County league. Our older age groups, U12 and older, typically must play with the County teams because they do not have enough teams for a league. Please review the specific age group listed below for more details. The County/school fields that we use usually for practices and games are:

### Practices

Craik Elementary- located about 1 mile past SMYO facility.

McDonough High School – located about 2 miles past the SMYO facility.

Bensville Park – located on Route 229, south of the Billingsley Rd & 229 intersection.

### Games

Pomonkey Annex – a soccer only complex located behind Matthew Henson Middle School in the Bryans Road area. Follow Billingsley Road west until it ends at the Bryan’s Road Fire Station and turn left at stop sign. About ½ mile, turn right onto Metropolitan Church Road. Turn left at Church parking lot and drive past church to the annex.

Bensville Park – see direction above.

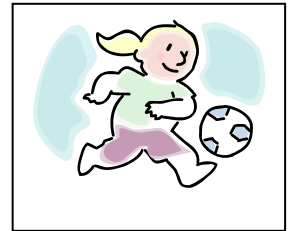
White Plains Park – Take Billingsley Road east to St. Charles Parkway. Go south about ½ mile and park is on the left.

Laurel Springs Park – located in LaPlata off Radio Station Road. Take Billingsley Road east to St. Charles Parkway. Drive south about 4-5 miles and take left turn onto Radio Station Road. About 1 mile on left is Laurel Spring Park and soccer fields are straight back left side.

Bryantown Soccer Complex – Located on Route 5 south of Waldorf.

### PeeWee Soccer

The new PeeWee program began in spring 2008 for 4 year olds. Players must be 4 years old before the season start and parents are required to be at each practice and game to help the coaches. The teams play 5v5 games with coaches on the field, two 15-minute halves, one referee, and 6-foot small goals. The teams practice 1 or 2 days per week at the SMYO fields and play about 8-10 games per season. All games and practices are at SMYO.



### U7

The 5 & 6 year olds play 7v7 games and 4 quarters of 10 minutes on a small field. The U7 teams have typically played at SMYO fields but we may play games with the County program. If teams play with the County, coaches have the option to be on the field with their team. At SMYO games, we encourage the coaches to remain along the touch lines. If teams play with the County, the games are either at Bensville Park or Pomonkey Annex.

### U9

The 7 & 8 year olds play 7v7 games and two 20-minute halves on an intermediate field. The teams typically practice at SMYO fields but may play games with the County. Practices may also be held at

Craik Elementary. If teams play with the County, the games are typically either at Bensville Park or the Pomonkey Annex.

### U12

The 9, 10, & 11 year olds play 8v8 games and two 25-minute halves on an intermediate field. The teams may practice at SMYO fields, Craik Elementary, or Bensville Park. Games are typically at either at Bensville Park or Pomonkey Annex.

### U14

The 12 & 13 year olds play 11v11 games and two 30-minute halves on a full-size field. The teams practice at McDonough HS or Bensville Park. Games are typically at either at Bensville Park or Pomonkey Annex. However, special end-of-season play or field problems may result in games at Laurel Springs, White Plains, or Bryantown.



### U18

Spring Season – the high school age players practice at McDonough HS or Bensville Park, play 11v11 with two 35-minute halves on a full-size field. These teams are separated into boys and girls teams and games are played at all the County facilities.

Fall Season – new program to begin in fall 2009 for high school players. Final details are not complete yet and will address the season to begin after high school sport teams make their team selections. The same rules as spring play will apply but may have an abbreviated schedule.

### Message from the Commissioners

Fun comes first with SMYO Soccer! We strive to provide a fun and safe environment for our children to learn and play soccer. We coach in the soccer program and try to see every team play at least one game per season. We encourage good sportsmanship and safety at all times. Please keep in mind that pets are not permitted at SMYO facilities and the County parks have strict rules that pets are to be 150 feet from any youth activity. SMYO has a designated smoking area in the parking lot by the dumpster and County parks do not permit smoking and alcoholic beverages.

For more information on our program, email us at [smyosoccer@comcast.net](mailto:smyosoccer@comcast.net). For more information on the Charles County Youth Soccer program, including park locations & directions, go to [www.charlescounty.org](http://www.charlescounty.org), select Outdoor Sports then Youth Soccer,

Melissa Blondell  
Joyce Dinello  
SMYO Soccer Commissioners